

BUS PASSENGER TRENDS

National overview



Overview

The information in this report is taken from both the Department for Transport's (DfT) Annual Bus Statistics 2010/11 and the DfT's Quarterly Bus Statistics published in September 2012

The DfT are due to release an updated version of the annual report in two weeks.

National trends

Bus passenger journeys in England increased by around 15 per cent between 2004/05 and 2008/09, but have remained broadly flat since then, with an increase in London offset by decreases outside London (see chart).

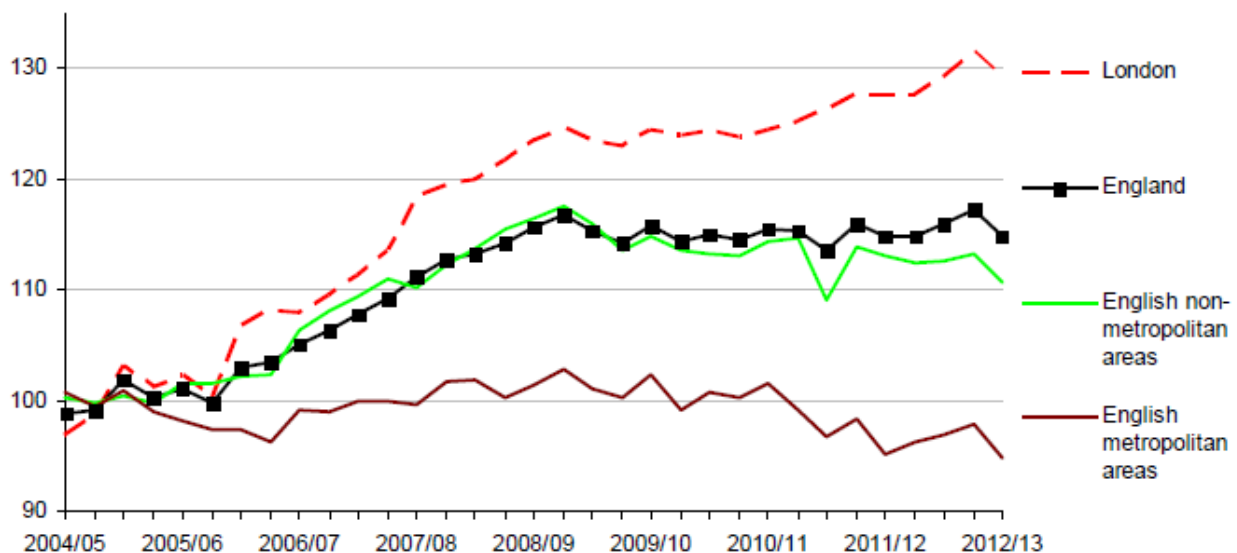
Between 2009/10 and 2010/11, journeys in England increased by 0.1 per cent to 4.61 billion, of which 2.27 billion (49 per cent) were in London. There were decreases of 1.7 per cent in metropolitan areas and 0.6 per cent in non-metropolitan areas, but an increase of 1.4 per cent in London.

Though figures for individual quarters should be interpreted with caution, they show a fall in seasonally adjusted journeys of 2 per cent for England compared with the previous quarter, with falls in London, metropolitan and non-metropolitan areas.

The table below uses 2004/05 as a base to compare changes in bus patronage levels. The axis is not actual trips but rather percentage changes since this base year to demonstrate the changes in each of the compared areas more clearly. For example London is shown to have increased by 30% from the base year to the first quarter of 2012/13.

England Bus Passenger trends indexed from 2004/5

Index: 2004/05=100



Plymouth's bus patronage trends

Plymouth's bus patronage has largely followed the same national trends for non metropolitan areas identified above since the base year of 2004/05. However, rather than levelling off or reducing after 2008/09 Plymouth's patronage continued to rise with a reduction observed in 2011/12 which is in line with national trends.

Year	2004/05	2005/06	2006/07	2007/08	2008/09	2009/10	2010/11	2011/12
Passenger journeys (million)	18.56	17.77	20.43	19.78	20.57	20.61	20.71	20.18